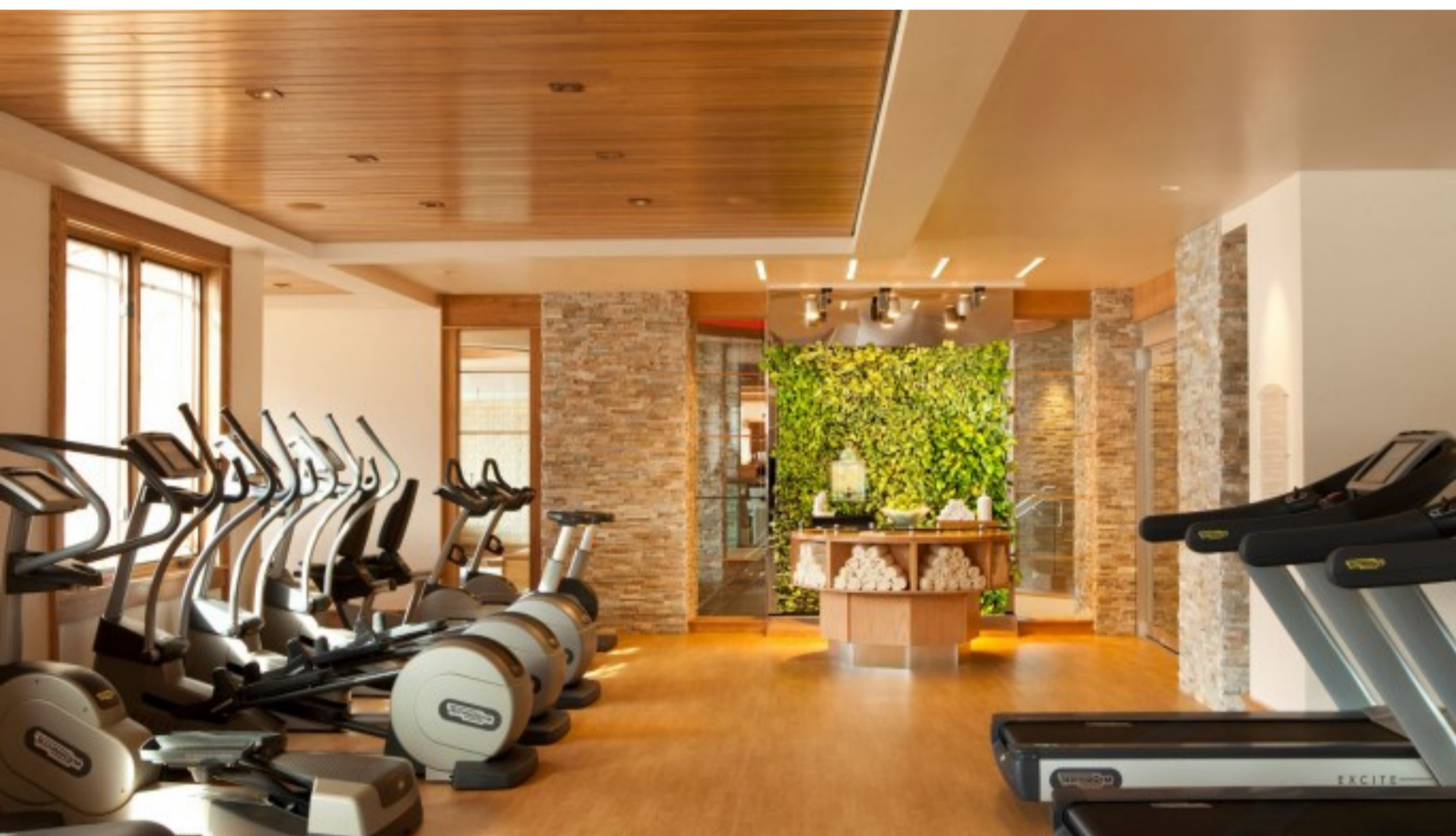


< See all Park City hotels

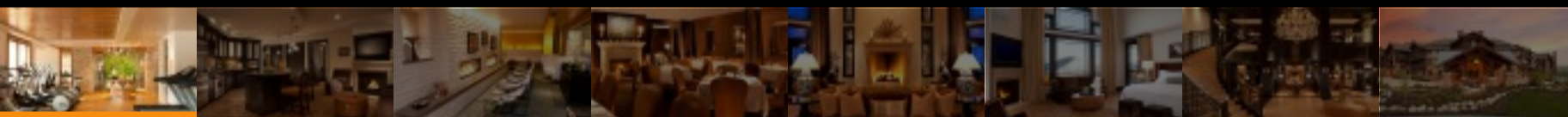
Waldorf Astoria Park City

Park City, Utah

Email Add to favorites Like 0 Pin it



Work out in the light-flooded fitness center.



Overview

About the Area

The Details

Ask the Editor

Reviews

Rustic-luxe retreat in Utah's largest mountain resort with ski-in mountain access and a residential vibe



Jetsetter Verified
Our editors have been here and it has met our standards



Fullscreen Gallery
View this property in full screen



TripAdvisor Rating
 600 Reviews

What we love

- Complimentary shuttle service to/from downtown Park City and neighboring resorts
- The heated outdoor pool has Wasatch Mountain views and beverage service
- The sleek spa, with its wide variety of treatments

What to know

- The resort is five miles from the restaurants and shops of downtown Park City
- A \$35 per day resort charge is added to cover phone, Internet, valet parking and shuttle service
- You can ski to the resort, but a heated gondola ride is required to get to the slopes

From **\$199** / night
Lowest available rate for the next 60 days

Check In

Check Out

Got a question? Don't hesitate.
877-JSET-USA/877-573-8872



Invite Your Entourage

Invite your jetset friends and you'll earn \$25 when they book their first trip on Jetsetter.

email@example.com

Add more people

Send Invitations



The Look

The lobby, scented with an earthy leatherwood aroma, sets the stage for the hotel's mountain-modern vibe, created by interior designer Stephen Brady. Crystal Baccarat chandeliers and artwork by Clay Blackmore blend with bronze stag statues, an inviting antique Italian fireplace, dark woods and re-upholstered antique furniture in leather and velvet. Outdoors, the hotel embraces an enormous pool enclave and a patio with neatly positioned firepits, ideal for making s'mores and gazing at the Wasatch Mountains.

Bed and Bath

Designed by Stephen Brady, the 175 guestrooms and residences range in size from cozy (320 square feet) rooms with gas fireplaces to slightly larger studios with kitchenettes to spacious four-bedroom hotel homes. Blending traditional decor with mountain style, rooms feature textured fabrics, a neutral palette, and furnishings from Mitchell Gold + Bob Williams, including chocolate-brown velvet sofas, leather chairs and mirrored dressers. The generous bathrooms are equipped with HDTVs and Salvatore Ferragamo amenities.

Beyond

Grab a pastry and cappuccino at Crave before heading out for mountain pursuits. Sunny summer afternoons are best spent at the pool (cabanas have recently been added). Mountain Salvation, a massage using oil and a pain-relieving gel, is a must for those who overexert themselves. In the evening book a table at Slopes, a sophisticated seasonally driven eatery and lounge with Baccarat chandeliers and walls adorned with hand-carved wooden deer antlers.

In the Area

The Canyons is home to one of Utah's best restaurants, **the Farm**, a comfortable spot for lunch that offers locally produced cuisine. An après-ski alternative can be found at **Jupiter Bowl**, a trendy bowling venue in Kimball Junction. Also nearby is the **Utah Olympic Park**, where you can ride a bobsled on the 2002 Olympic course. A 10-minute ride via complimentary shuttle puts you on Park City's historic Main Street for ice cream at Java Cow or artisanal cocktails at **High West**, Utah's first distillery since the 1800s.

— Kim Fredericks

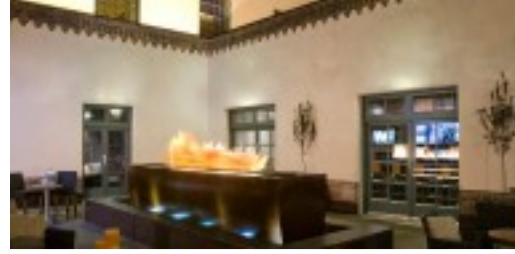




Andaz Amsterdam
Prinsengracht
[Visit Sale](#)



Oxygen Jungle Villas
[Visit Sale](#)



Hotel Andaluz
[Visit Sale](#)



Forty 1 North — Newport, RI
[Visit Sale](#)

JETSETTER

[About](#)

[Blog](#)

[FAQ](#)

[Careers](#)

[Contact Us](#)

[Terms of Service](#)

[Privacy Policy](#)

[Security](#)

[Website Terms of Use](#)

[Upcoming Sales](#)

[Personal Travel Planning](#)

[Gift Cards](#)

 [Mobile](#)

 [Twitter](#)

 [Facebook](#)

 [877-JSET-USA/877-573-8872](tel:877-JSET-USA/877-573-8872)